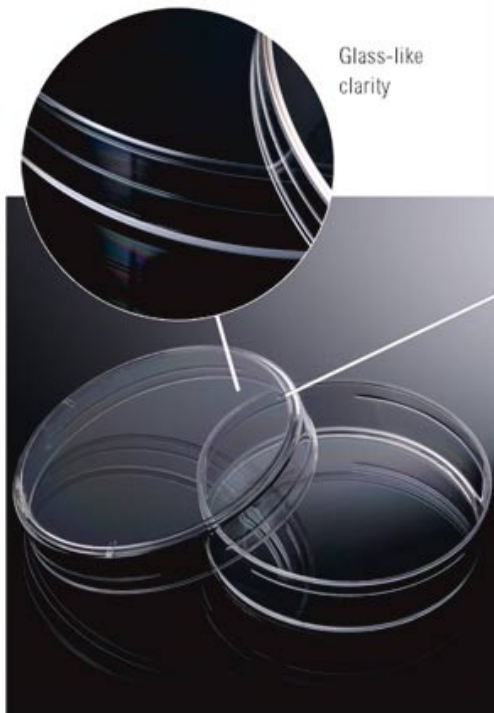


# Microbiology

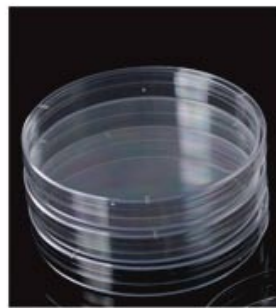
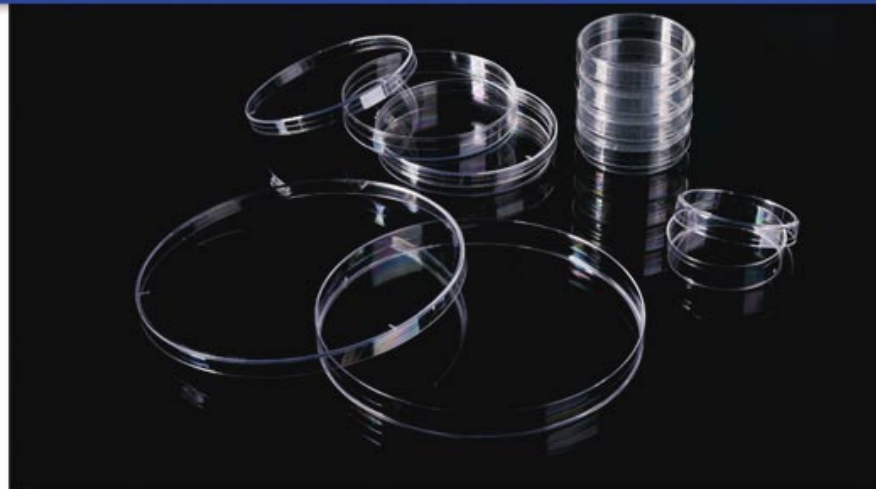


## FEATURES

- \* Easy stacking
- \* Vented for better gas exchange
- \* Heavy design for better heat resistance
- \* Manufactured from crystal polystyrene for optimal analysis by microscopy
- \* Guaranteed sterilized
- \* Diameter: 90mm; 60mm; 150mm; height: 15 mm



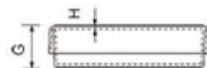
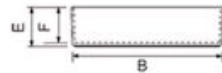
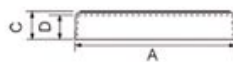
Glass-like clarity



Easy stacking



Vents for gas exchange



66-1560



66-1501

## ORDERING INFORMATION

Cat #	Size	Color	Sterile	Unit
66-1560	60x15mm	Clear	Yes	10 Pieces/bag, 50 Bags/case
66-1501	90x15mm	Clear	Yes	10 Pieces/bag, 50 Bags/case
66-1515	150x15mm	Clear	Yes	10 Pieces/bag, 20 Bags/case

## PRODUCT PARAMETER

Cat #	Description	Dimensions=mm							
		A	B	C	D	E	F	G	H
66-1501	Petri Dishes	O.D. 89.3	O.D. 86.5	7.9	6.7	14.9	13.4	16.1	1.2
66-1560	Petri Dishes	O.D. 57.4	O.D. 53.6	10.1	8.7	14.2	12.7	15.5	1.4

\*See our full line of Inoculation loops, needles and spreaders from page 41 to 42.

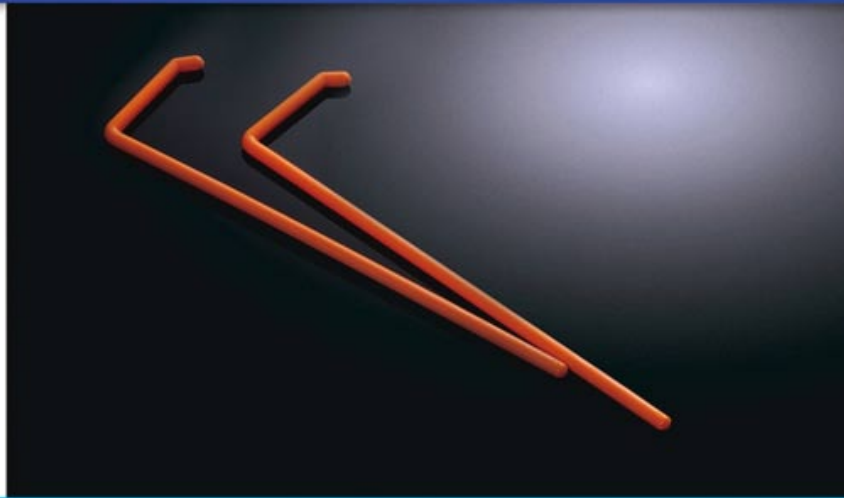
\*See our full line of Cell Scrapers and Lifters on page 37.



# Cell Spreaders

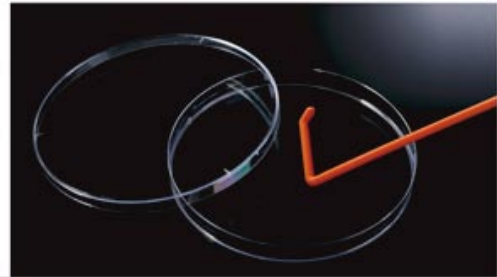
## FEATURES

- \* Ideal for even spreading of bacterial cultures
- \* Disposable
- \* Smooth spreading surface with slight upward angle reduces the risk of damaging agar surface
- \* L-shape allows application on the entire Petri Dish or plate surface
- \* Pre-sterilized
- \* Polystyrene



## PACKAGING

- \* Available in individually wrapped and 10 pieces per bag which keep them safe from contamination and easy to be used
- \* 10 pieces pack includes a piece of cardboard with product description to better protect products and the bag can be resealed

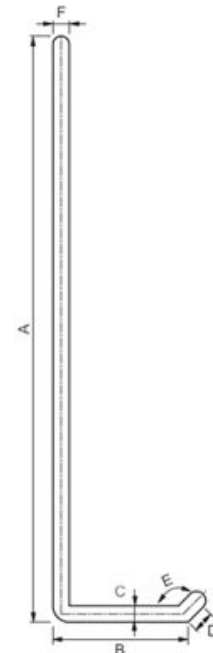


## ORDERING INFORMATION

Cat #	Pack	Color	Sterile	Unit
65-1001	Individual	Orange	Yes	500 Pieces/case
65-1010	10 Pieces/pack	Orange	Yes	500 Pieces/case

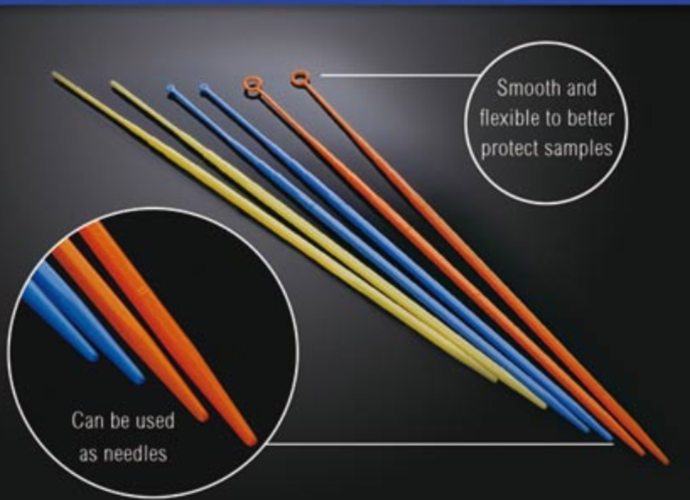
## PRODUCT PARAMETER

Cat #	Description	Dimensions=mm					
		A	B	C	D	E	F
65-1001	Cell Spreader	144.0	33.2	O.D.4.0	O.D. 5.3	135°	O.D. 4.0



\*See Biologix Petri Dishes on page 40.

# Inoculating Loops & Needles

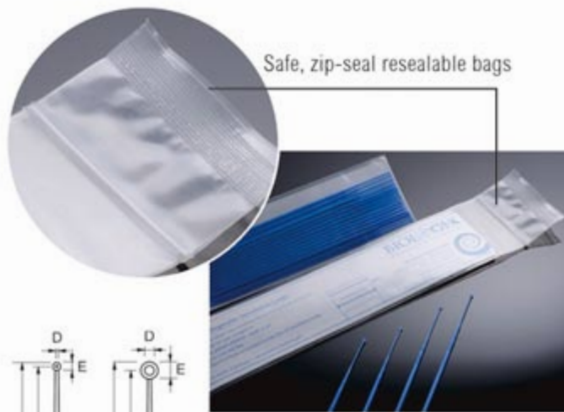
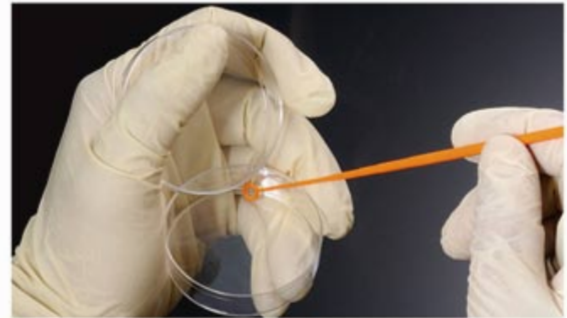


## FEATURES

- \* High impact polystyrene loops and needles are smooth and flexible to facilitate uniform and smooth streaking without damaging the gel surface
- \* Needles are straight and suitable for removal of specimens of single colonies
- \* Packed sterile in safe, tamper proof, zip-seal resealable bags
- \* The other end of the loops can be used as needles
- \* Freedom from lubricants, oils and electrostatic charges enables consistent wetting and complete liquid transfer

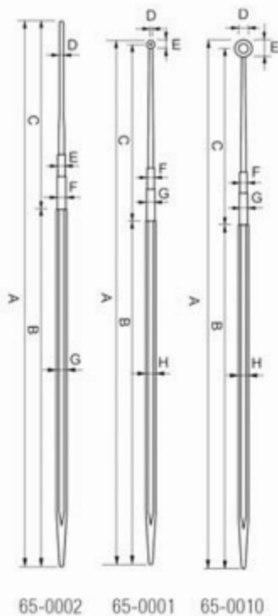
## LOOP/NEEDLE DESIGN

- \* Loops available in 1µl and 10µl sizes
- \* Needles are ideal for the removal of single colonies
- \* Ultra-smooth loop surface



## PACKAGING

- \* 25 Pieces per bag keep them safe from contamination and easy to be used
- \* 25 pieces pack includes a piece of cardboard with product description to better protect products and the bag can be resealed



## ORDERING INFORMATION

Cat #	Size	Description	Color	Sterile	Unit
65-0001	1µl	Loops	Blue	Yes	25 Pieces/pack, 1,000 Pieces/case
65-0010	10µl	Loops	Orange	Yes	25 Pieces/pack, 1,000 Pieces/case
65-0002	-	Needles	Yellow	Yes	25 Pieces/pack, 1,000 Pieces/case

## PRODUCT PARAMETER

Cat #	Description	Dimensions=mm							
		A	B	C	D	E	F	G	H
65-0010	Inoculating Loop	200.0	130.0	66.8	O.D. 3.6	O.D. 6.5	O.D.2.7	O.D. 3.1	O.D.3.8
65-0001	Inoculating Loop	198.3	130.0	66.8	O.D. 0.8	O.D. 3.0	O.D.2.7	O.D. 3.1	O.D.3.8
65-0002	Inoculating Needle	198.5	131.7	66.8	O.D. 1.5	O.D. 2.7	O.D.3.1	O.D. 3.8	-

\*See Biologix Petri Dishes on page 40.

# Swab Tubes

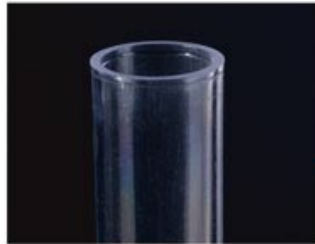


## FEATURES

- \* Suitable for collection and transport of bacteriological, serological and cytological samples
- \* Also useful for hygienic controls in food industry as well as in environmental field
- \* The swab tubes provide the flexibility to address many types of sample collection and preparation
- \* Wrapped in convenient peel pouch format
- \* Polystyrene swab tubes are clear like glass
- \* Tubes have the properties of glass but will have minor scratches
- \* Sterilized

## TUBES DESIGN

- \* Swab tubes are made of polystyrene
- \* The soft smooth heads of the swabs will not scratch or damage the internal tube surface
- \* Tubes have uniform wall thickness and exacting diameters
- \* Tube rims are polished and smooth
- \* Tube bottoms are perfectly formed
- \* Diameter: 12 mm; height: 75 mm



Tube has uniform wall thickness and exacting diameter

Easy opened and closed



## ORDERING INFORMATION

Cat #	Volume	Description	Swab	Color	Sterile	Unit
12-8275	5ml	12 x 75mm	Cotton	Clear	Yes	500 Pieces/bag, 4 Bags/case

\*See Biologix Test Tubes on page 10.